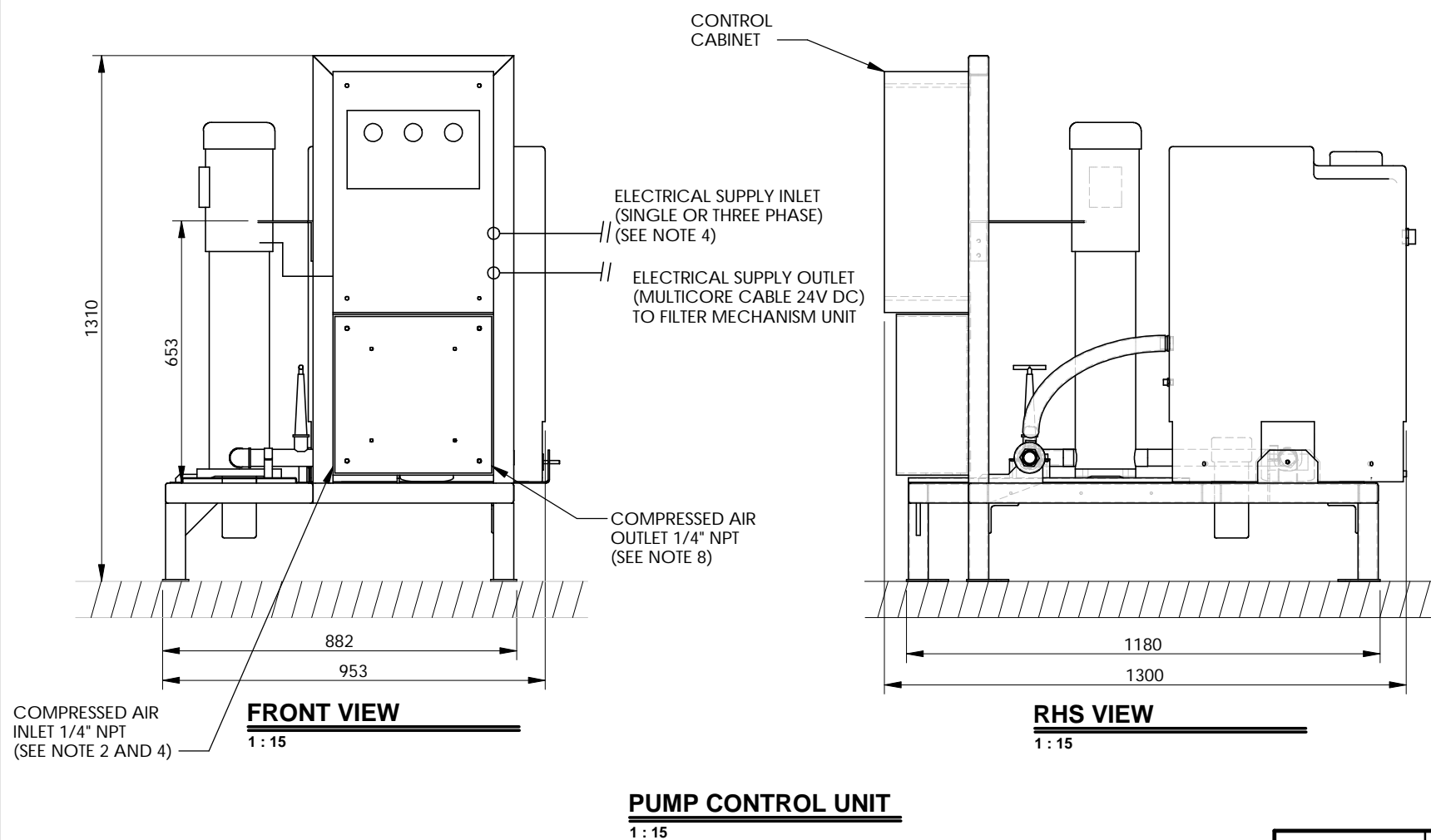


- NOTES :**
- 1) WATER SUPPLY (VIA 1" WATER SUPPLY INLET) MUST BE OF POTABLE WATER QUALITY AND AVAILABLE ON DEMAND AT 4 BAR PRESSURE. OTHER SOURCES MAY BE ACCEPTABLE SUBJECT TO SITE SURVEY.
 - 2) COMPRESSED AIR (VIA 1/4" COMPRESSED AIR INLET) MUST BE PREFILTERED, FREE OF CONDENSATE AND AVAILABLE ON DEMAND (5 CFM PER FILTER UNIT) AT 6 BAR PRESSURE.
 - 3) FULL WORKING ACCESS (MIN 1 METRE) AROUND PERIMETER OF UNIT IS RECOMMENDED.
 - 4) LOCAL ISOLATION OF SUPPLY UTILITIES (AIR, POWER, WATER) TO PUMP UNIT BY EXTERNAL MEANS IS RECOMMENDED.
 - 5) FINAL UNIT SPECIFICATIONS ARE BASED UPON AVAILABLE POWER SUPPLY REQUIREMENTS AND NUMBER OF INDIVIDUAL FILTER UNITS INSTALLED.
 - 6) SECURING THE PUMP CONTROL UNIT TO A RIGID STRUCTURE (OR FOUNDATION) IS RECOMMENDED.
 - 7) A SUITABLE SHELTER OVER THE PUMP UNIT IS RECOMMENDED FOR PROTECTION AGAINST ENVIRONMENTAL ELEMENTS.
 - 8) CONNECTIONS TO FILTER MECHANISM UNIT (VIA WATER AND AIR SUPPLY OUTLETS) MUST BE WITHIN 5 METRES. PLEASE REFER TO FILTER UNIT INSTALLATION PROFORMA.
 - 9) REMOTE START ACTIVATION BY 24 VDC INPUT WITH UNIT MONITORING FEATURES ARE STANDARD.
 - 10) ALL ANCILLARY WORKS TO BE SUPPLIED AND INSTALLED BY THE CLIENT.
- FOR FURTHER INFORMATION PLEASE CONTACT YOUR LOCAL BALEEN REPRESENTATIVE.



PUMP CONTROL UNIT
1 : 15

DRAWN	SER	BALEEN FILTERS PTY LTD 168 Melbourne Street, North Adelaide SA 5006 AUSTRALIA Tel: +61 8 8239 2422 Fax: +61 8 8239 0722 email: info@baleenfilters.com	PROJECTION	DESCRIPTION	PROJECT
DATE	18/11/03			PUMP CONTROL UNIT INSTALLATION PROFORMA	-
CHECKED	YRO				SCALE
DATE	25/04/03		1:15	BASIC UNIT	FINAL